

9E-3 Body Structure:

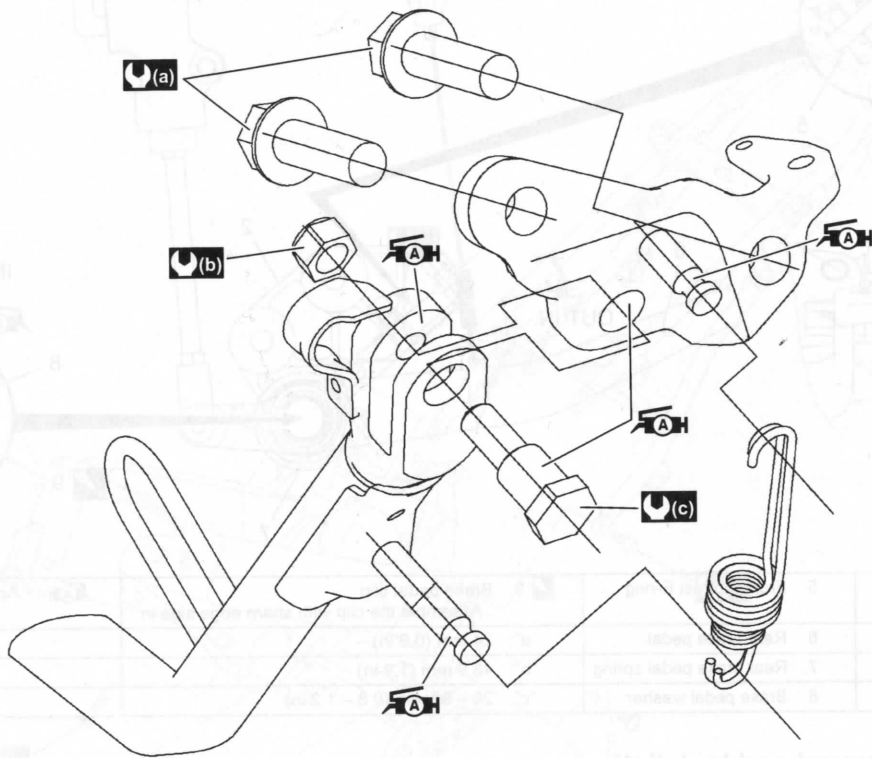
Pillion Footrest Removal and Installation

BENE31J19506016

Refer to "Pillion Footrest Construction" (Page 9E-2).

Side-stand Construction

BENE31J19506013



IE31J1950003-03

(a) : 80 N·m (8.0 kgf-m, 58.0 lbf-ft)	(c) : 10 N·m (1.0 kgf-m, 7.5 lbf-ft)
(b) : 40 N·m (4.0 kgf-m, 29.0 lbf-ft)	AH : Apply grease to sliding surface.

Side-stand Removal and Installation

BENE31J19506017

Refer to "Side-stand Construction" (Page 9E-3).

Specifications

Tightening Torque Specifications

BENE31J19507001

Reference:

For the tightening torques of fasteners not specified in this page, refer to:
"Frame Construction" (Page 9E-1)
"Side-stand Construction" (Page 9E-3)
"Fasteners Information" in Section 0C (Page 0C-10)

Special Tools and Equipment

Recommended Service Material

BENE31J19508001

NOTE

Required service materials are also described in:
"Front Footrest Construction" (Page 9E-2)
"Pillion Footrest Construction" (Page 9E-2)
"Side-stand Construction" (Page 9E-3)